

MARIO is Revolutionising Performance Management and the opportunities for risk based maintenance optimisation in the delivery of Highways Asset Management. MARIO is a service from Costain which provides Highways Data Collection, Software Analytics and delivery of Knowledge in fully configurable Dashboards.

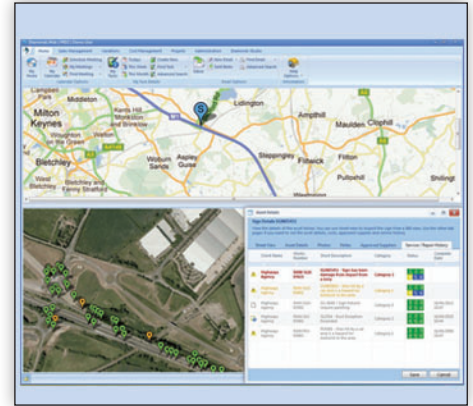
WHY TARGET INTEGRATED ASSET MANAGEMENT?

Advanced Asset Management improves our ability to manage our network assets to achieve optimum whole life cost performance within set constraints such as budgets, condition performance indicators and agreed risk levels. It is about maintaining our assets at the right time, using the most appropriate interventions in order to maximise the lifespan of our network assets and enable us to deliver the best possible value for money. It is about verifying that work has been completed right time, right location to the right performance metrics.

STRATEGIC ASSET MANAGEMENT

Strategic Asset Management is the disciplined process of gaining, maintaining and disposing of the asset in an optimal state with respect to performance risk at the least cost.

Surveying by this method allows you effectively survey 1.2 Million points per second, coupled with very accurate photogrammetry data. Obviously you do not want all of those dots. We extract contextual information to enhance the course visual inspection and detailed visual inspection.



This knowledge is then used to inform programming decisions and optimise the asset management programme. This proves an invaluable tool for mounting a demonstrable case for addition monies as part of an asset recovery plan. Technology advances in hardware and software during the last 5 years have delivered sensors and software capable of analysing literally billions of bits of data. This data is also used to form a topographical survey of the network at a vastly reduced cost to traditional methods.

In the same way that a surgeon cannot visually assess the growth of a tumour, the road network degrades at a rate which is difficult to assess even with trained and experienced asset managers. The neural surgeon relies on the hardware and software to give them accurate rates of change from which they can assess a correct intervention route.

Costain is now applying similar techniques to make accurate informed decisions on performance outcomes, finance and risk.

Please ring Joe Rice-Jones for more information and to arrange a free consultation.



CONTACT

Joe Rice-Jones
Project Manager
Tel: 07920 494272
joe.rice-jones@costain.com

ENGINEERING TOMORROW...TODAY

InP_018 Rev. 003

COSTAIN GROUP PLC

Costain House, Vanwall Business Park,
 Maidenhead, Berkshire, SL6 4UB
 Tel: +44 (0) 1628 842444



www.costain.com



Facebook
 @Costain Group



Twitter
 @Costain Group



LinkedIn
 @Costain Group